



**El Ariss 620 is an exclusive building featuring premier beachfront condominium residences with panoramic views of the Pacific Ocean and the islands of Puerto Viejo Bay. It is a nine story building with 14 condominiums in six floor plans, from a one master bedroom suite to four master bedrooms penthouse. It successfully combines Southern California's high quality design with green, and energy efficient construction elements.**



## **A M E N I T I E S**

- Internet access to your private security system**
- Secured state of the art keyless locks for flexibility**
- Double glazed glass doors for energy saving**
- Mini split air-conditioner in each room with ceiling fan for energy saving**
- Automated security storm curtains**
- Tankless water heater**
- Central gas system**
- Filtered water**
- Hand crafted crown moldings with sunken ceiling**
- Stainless steel appliances**
- Kitchen with granite counters**
- Master bedroom suites with private full bathrooms**
- Roof top club house with community hall**
- Infinity lap pool**
- BBQ and picnic area**
- Exercise gym**





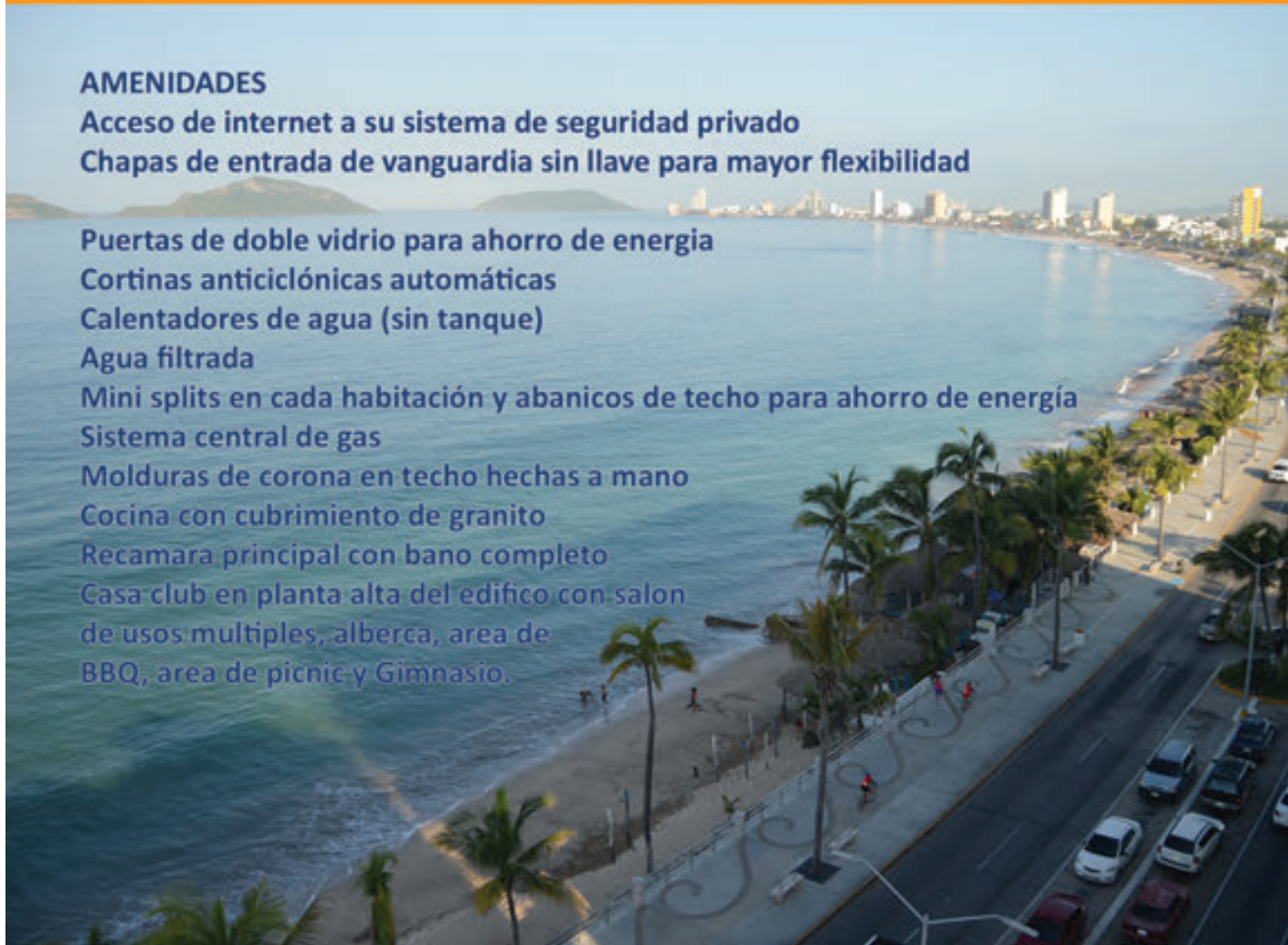
**El Ariss 620, es un exclusivo edificio premier de condóminos residenciales frente al mar, con vistas panorámicas del Océano Pacífico y las islas de la Bahía de Puerto Viejo. Es un edificio de nueve pisos con 14 condominios y seis diferentes modelos de condominios, desde suite de una recámara, hasta suite de cuatro recámaras localizado en el Penthouse. Combina exitosamente el diseño de alta calidad del sur de California, con elementos de construcción, que son de energía sustentable y amigables con el medio ambiente.**



## **AMENIDADES**

**Acceso de internet a su sistema de seguridad privado  
Chapas de entrada de vanguardia sin llave para mayor flexibilidad**

**Puertas de doble vidrio para ahorro de energía  
Cortinas anticiclónicas automáticas  
Calentadores de agua (sin tanque)  
Agua filtrada  
Mini splits en cada habitación y abanicos de techo para ahorro de energía  
Sistema central de gas  
Molduras de corona en techo hechas a mano  
Cocina con cubrimiento de granito  
Recámara principal con baño completo  
Casa club en planta alta del edificio con salón de usos múltiples, alberca, área de BBQ, área de picnic y Gimnasio.**







# Level 2



## Las Olas

**1 Master Suite, 1 Bath  
1 Recamara, 1 Baño  
(710Sqft/66m2)**



## La Bahia

**1 Master Suite, 1 Bath  
1 Recamara, 1 Baño  
(1023Sqft/95m2)**



## La Marina

**1 Master Suite, 1 Bath  
1 Recamara, 1 Baño  
(947Sqft/88m2)**





*Levels 3-7*



*Las Islas*

**2 Master Suite, 2 Bath  
2 Recamara, 2 Baño  
(1400 Sqft/130m2)**



*La Playa*

**2 Master Suite, 2 Bath  
2 Recamara, 2 Baño  
(1722-Sqft/160m2)**





El Ariss 620 is an exclusive building featuring premier beachfront condominium residences with panoramic views of the Pacific Ocean and the islands of Puerto Viejo Bay. It is a nine story building with 14 condominiums in six floor plans, from a one master bedroom suite to four master bedrooms penthouse. It successfully combines Southern California's high quality design with green, and energy efficient construction elements.



## AMENITIES

- Internet access to your private security system
- Secured state of the art keyless locks for flexibility
- Double glazed glass doors for energy saving
- Mini split air-conditioner in each room with ceiling fan for energy saving
- Automated security storm curtains
- Tankless water heater
- Central gas system
- Filtered water
- Hand crafted crown moldings with sunken ceiling
- Stainless steel appliances
- Kitchen with granite counters
- Master bedroom suites with private full bathrooms
- Roof top club house with community hall
- Infinity lap pool
- BBQ and picnic area
- Exercise gym



El Ariss 620, es un exclusivo edificio premier de condóminos residenciales frente al mar, con vistas panorámicas del Océano Pacífico y las islas de la Bahía de Puerto Viejo. Es un edificio de nueve pisos con 14 condominios y seis diferentes modelos de condominios, desde suite de una recámara, hasta suite de cuatro recámaras localizado en el Penthouse. Combina exitosamente el diseño de alta calidad del sur de California, con elementos de construcción, que son de energía sustentable y amigables con el medio ambiente.



## AMENIDADES

Acceso de internet a su sistema de seguridad privado

Chapas de entrada de vanguardia sin llave para mayor flexibilidad

Puertas de doble vidrio para ahorro de energía

Cortinas anticiclónicas automáticas

Calentadores de agua (sin tanque)

Agua filtrada

Mini splits en cada habitación y abanicos de techo para ahorro de energía

Sistema central de gas

Molduras de corona en techo hechas a mano

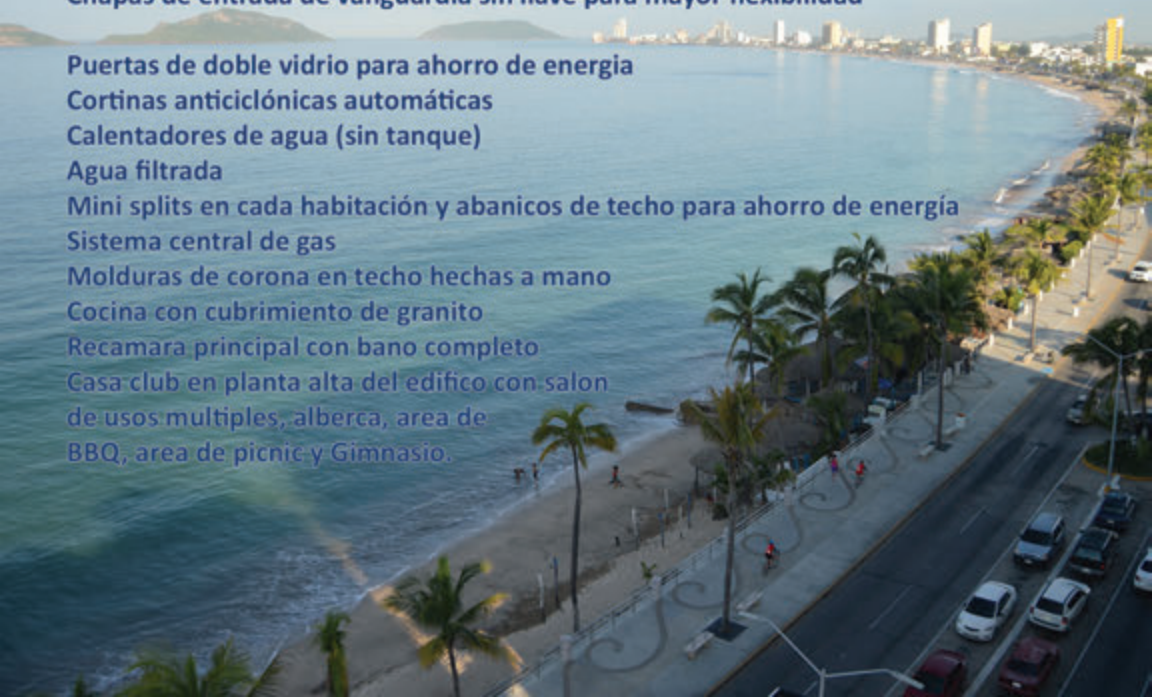
Cocina con cubrimiento de granito

Recámara principal con baño completo

Casa-club en planta alta del edificio con salón

de usos múltiples, alberca, área de

BBQ, área de picnic y Gimnasio.







## Level 2



### Las Olas

**1 Master Suite, 1 Bath  
1 Recamara, 1 Baño  
(710Sqft/66m2)**



### La Bahia

**1 Master Suite, 1 Bath  
1 Recamara, 1 Baño  
(1023Sqft/95m2)**



### La Marina

**1 Master Suite, 1 Bath  
1 Recamara, 1 Baño  
(947Sqft/88m2)**



*Levels 3-7*



*La Islas*

**2 Master Suite, 2 Bath  
2 Recamara, 2 Baño  
(1400 Sqft/130m<sup>2</sup>)**



*La Playa*

**2 Master Suite, 2 Bath  
2 Recamara, 2 Baño  
(1722 Sqft/160m<sup>2</sup>)**





Level 8



**PENTHOUSE**

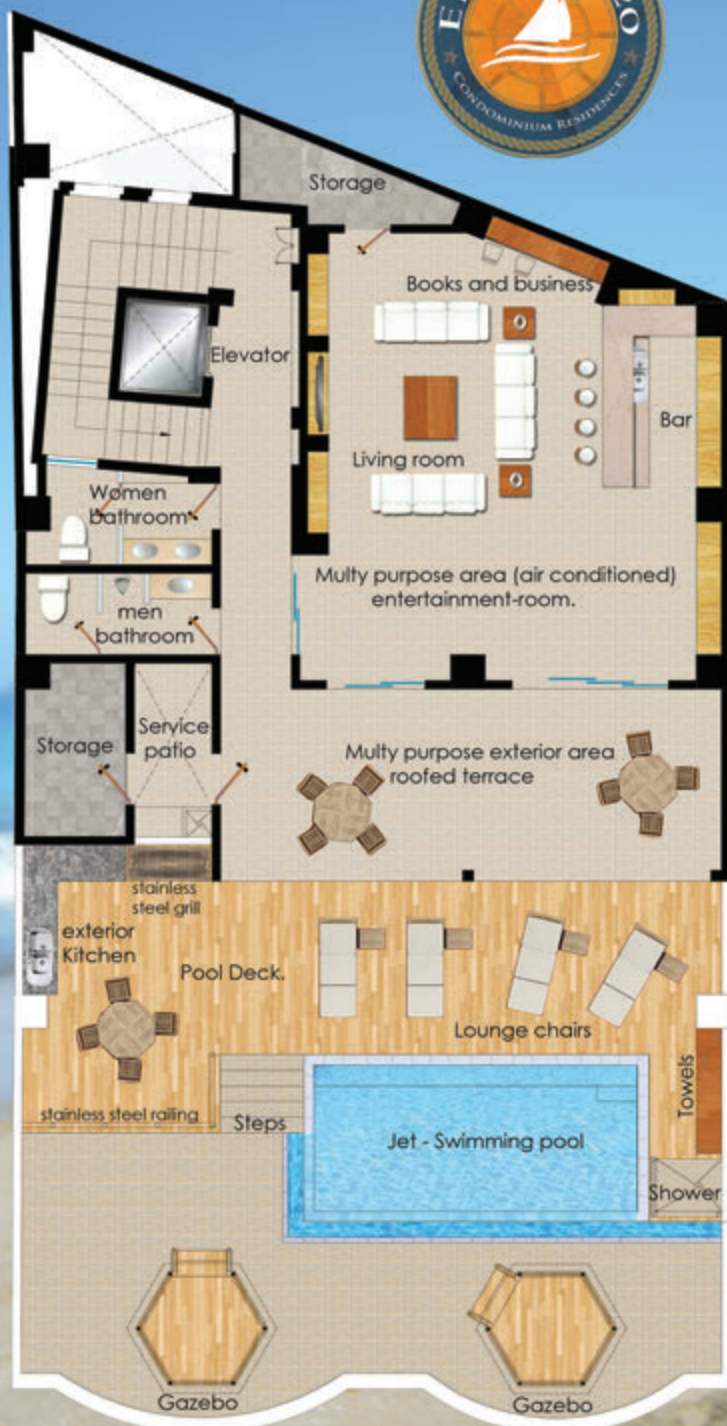


*Las Vistas*

**4 Master Suite, 4 Bath  
4 Recamara, 4 Baño  
(3165Sqft/294m2)**



Level 9



## CLUB HOUSE



## Casa de Club

**Multiple use area**  
**Internet access**  
**Swimming pool**  
**BBQ & picnic area**  
**Gymnasium**

**Salon de usos multiples**  
**Acceso de internet**  
**Alberca para nadar**  
**Area de BBQ y picnic**  
**Gimnasio**



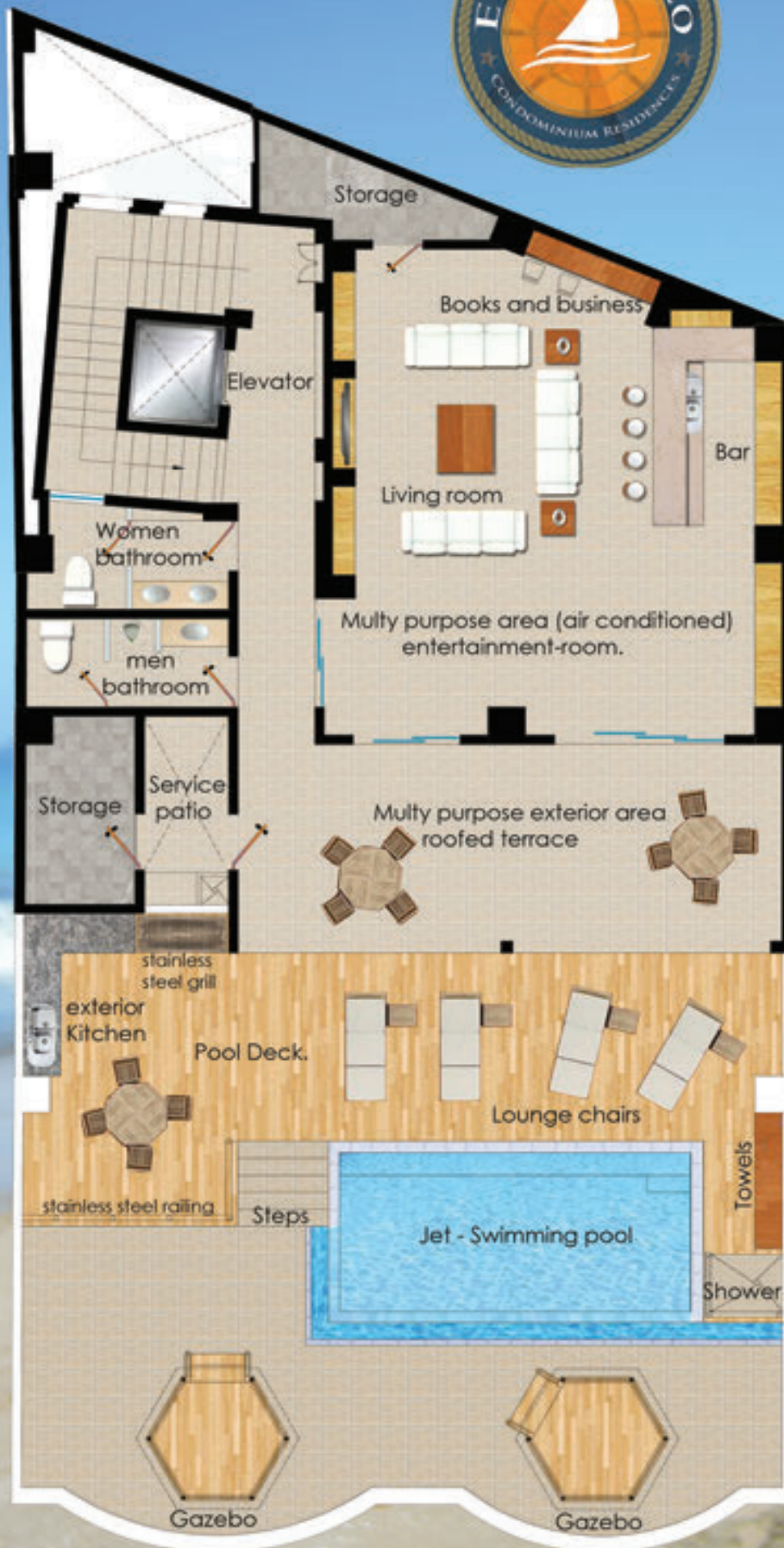


620 Avenida Del Mar  
Col. Ferrocarrilera  
82013 Mazatlan, Sin, Mexico  
**Mx. Tel: 669-176-9785**  
**USA Tel: 858-472-2551**  
**info@elariss620.com**  
**www.elariss620.com**

Disclaimer: In our continuing efforts to improve these residences, we reserve the right to modify our change plans, specifications, features and prices without notice. Renderings are artist's conception and are intended for general reference only. Room sizes and square footage are based on architect's measurements. Please refer to the disclosure statement for specific offering details. The HOA association's regulations will include all specifics.



# Level 9



## CLUB HOUSE



### *Casa de Club*

- Multiple use area
- Internet access
- Swimming pool
- BBQ & picnic area
- Gymnasium

- Salon de usos multiples
- Acceso de internet
- Alberca para nadar
- Area de BBQ y picnic
- Gimnasio





620 Avenida Del Mar  
Col. Ferrocarrilera  
82013 Mazatlan, Sin, Mexico  
**Mx. Tel: 669-176-9785**  
**USA Tel: 858-472-2551**  
**info@elariss620.com**  
**www.elariss620.com**

Disclaimer: In our continuing efforts to improve these residences, we reserve the right to modify our change plans, specifications, features and prices without notice. Renderings are artist's conception and are intended for general reference only. Room sizes and square footage are based on architect's measurements. Please refer to the disclosure statement for specific offering details. The HOA association's regulations will include all specifics.